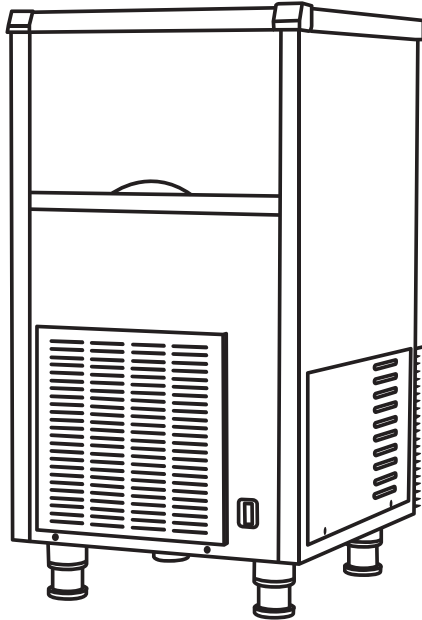


ICE MAKER User's Manual

Model KCU-80-AB

- This product is designed for indoor installation. Please be sure to install it indoors.
- This product requires a floor drain.
- The water and drain hoses are not supplied with the product and will need to be purchased locally.
- The external appearance, design, color, and components of this machine may be changed without prior notice.



Toll Free: (888) 275-4538
international: (514) 737-9701
Fax: (514) 342-3854
Toll Free Fax: (877) 453-8832

CONTENTS

Features of the Product	3
Safety Warning	4
Safety Precautions	10
Major Components	12
Cautions for Installation	13
Installation	15
Correct Operation	16
Disassembling, Cleaning	17
How to Clean	18
Ice Making and Harvest	20
Checkpoints/	21
Maintenance Product	22
Specifications	23
Troubleshooting Chart	24
Product Warranty	

– Keep this user manual within reach for your reference.

Features of the Product

Thank you for purchasing this ice maker
Please read through this user manual as it aims to prevent injuries to users and ensure complete customer satisfaction.

New Technologies Developed by Professionals, Fast Freezing through 4 Seasons, Powerful Ice Making Capacity

1. MICOM Controller

The ice making system is optimized using an automatic ice formation control sensor.

2. Integrated ice formation control sensor

When the ice container is full, the automatic sensor stops the ice making system to reduce power and water consumption.

3. Pure, crystal ice

Features a nozzle spray type to form transparent cubic crystals. Pure ice crystals are formed by the freezing point depression principle.

4. Low noise, low vibration

High efficiency, low noise fan provides quiet operation and an economical ice making system.

5. Ergonomic design

User convenience implemented by the sloped door designed with human-spatial engineering.

Safety Warning

Please read and save these instructions. Precautions are marked with symbols to prevent accidents which could be caused by incorrect operation. Failure to comply with instructions could result in personal injury and/or property damage.



Danger

This symbol means that if the user fails to observe the instructions, the danger will cause serious physical injury, death or major property damage.



Warning

This symbol means that if the user fails to observe the instructions, there can be serious physical injury, death or major property damage.



Caution

This symbol means that if the user fails to observe the instructions, there is a possibility of physical injury to the user, or damage to property.

- ※ Injury: A scratch, burn (hot, cold), or electric shock which does not require hospitalization or long-term medical treatment.
- ※ Damage to property: The damages to a building, furniture, etc.

The meanings of the symbols are as follows;



Danger, Warning, Caution



The system must be grounded (connected to the earth).



Do not touch!



Do not disassemble



Prohibited



Electric shock hazard



Keep fire source away



Burn hazard



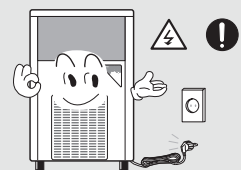
Very Important



Warning

◆ Make sure that the power supply conforms to the specifications.

- Check that the supply voltage is in accordance with the voltage specified on the name plate.
- The name plate is attached on the left side of the product.
- Incorrect power supply voltage can cause product failure, fire or an electric shock.

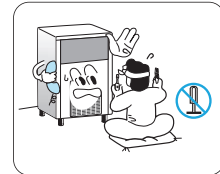




Warning

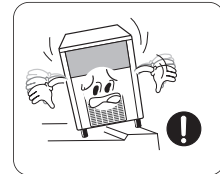
■ Never disassemble, repair or remodel the product.

- Unauthorized disassembling, repairing, or modifying may deteriorate the safety of the product.
- In case of any failure, please refer to this User's Manual.



■ Install the product on a level, even and strong floor.

- Operation of the product in an unstable condition may cause failure and/or deformation.
- Operation on a moving surface, such as a vehicle or ship, may result in the unit falling over.



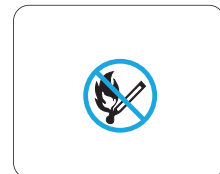
■ Keep away from any fire source or inflammable material (spray cans, butane container, gas cylinder, oil, etc.).

- Otherwise, an explosion or fire may break out.



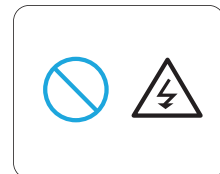
■ Do not spray insecticide or other inflammable sprays, perfume, etc., near the product.

- Otherwise, a fire may break out.



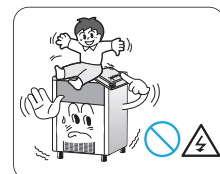
■ Do not store anything other than ice inside the product.

- It may cause unsanitary conditions.
- It may cause product failure or electric shock.



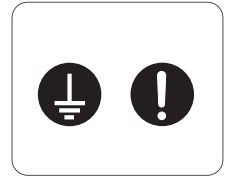
■ Do not place or store heavy items on the top of the product.

- Excessive weight can cause the unit to overheat and/or a fire.

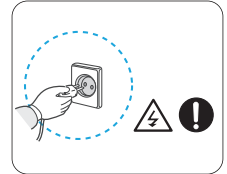


Warning

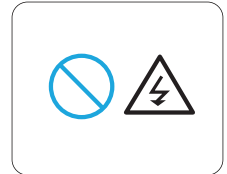
- The Ice Machine must be plugged into a grounded outlet.
 - Do not use an adapter, or an extension cord.
 - Do not remove the grounding prong.
 - The unit must be installed in accordance with the state and local electrical and plumbing codes.



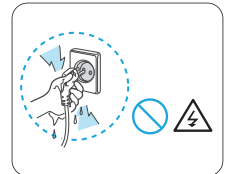
- GFCI/GFI circuit protection is not recommended unless it is required.
 - Rated sensitive current: 30mA.
 - An ungrounded circuit may cause product failure or an electric shock.



- The power cord should be removed by holding the plug.
 - Do not disconnect power by holding the cord, or electric shock may occur.
 - Damage to the power cord could cause fire or electrical shock.



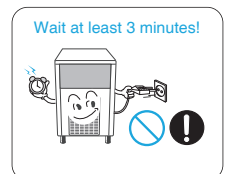
- Do not connect or touch the power cord with wet hands.
 - Otherwise, the user may get an electric shock.



- Make sure power cord is clean and free from any foreign matter.
 - If the prongs of the power plug are dirty, wet or improperly connected to the receptacle, electric shock or fire may occur.



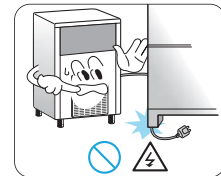
- When reconnecting the power cord after disconnection, wait for at least three minutes before reconnection.
 - Reconnection within three minutes may cause product failure.



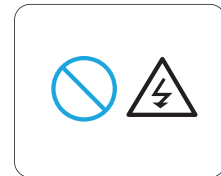


Warning

- Do not bend the power cord excessively or place a heavy object on top of the cord.
 - Otherwise, there is a danger of current leak, or electric shock.



- Replace damaged power cord and the cord plug if the metal components are worn or loose.
 - A damaged cord or plug can cause an electric shock or fire.



- Do not unplug or move the product during operation.
 - Otherwise, water leaks, product failure or fire may result.

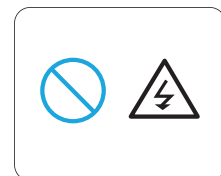


Troubleshooting

- In case of an earthquake, fire, abnormal sound or smell from the product, stop operation and unplug the power cord from the receptacle immediately.

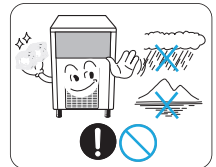
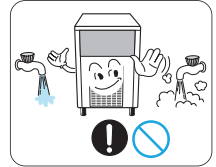
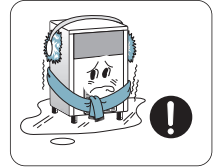
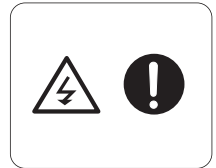
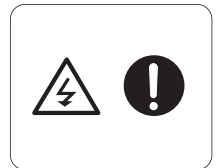
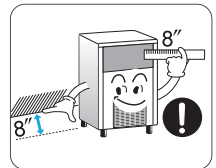


- Do not install the product in a wet or humid place.
 - Do not install the product near any hot water tanks.
 - Do not install the product in a bathroom, shower room, or near a swimming pool.
 - If water penetrates into the product, it may cause failure and/or electric shock



Warning

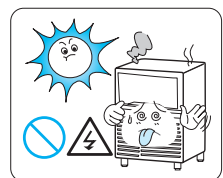
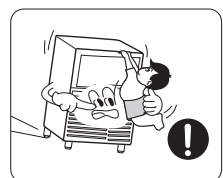
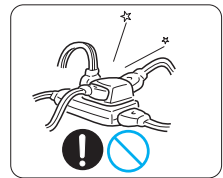
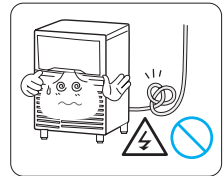
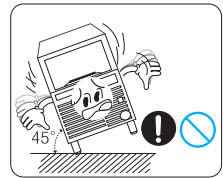
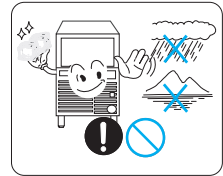
- Provide at least 8" of space between the product and the wall.
 - Being too close to the wall may cause product failure.
- For cleaning and maintenance, remove the power plug from the outlet and close the water supply valve. Perform work only after the ice making operation stops.
 - It may cause an electric shock or injury
- Be sure to clean the condenser at least once a month.
 - When dust accumulates, ventilation is restricted which may cause low product performance, excess power consumption, product failure.
- The ambient temperature must be between 50°F ~ 100°F.
 - If installing in a cold place 50°F or below, freeze break may occur.
 - If installing in a hot place 100°F or over, product failure may occur.
- The pressure and temperature of the supply water must be 20~80 psi, and 50°F~90°F, respectively.
 - If the pressure or temperature of the supply water exceeds the above specified ranges, the ice quality may deteriorate and/or product failure may occur.
- Make sure to connect the product to the cold water outlet.
 - Connection to a hot water line may cause product failure.
- The supply water must be tap water.
 - The use of a water filter is highly recommended





Warning

- Be sure to use the potable water supply.
- When moving the product, do not go over 45 degrees on the incline.
 - It may cause a product failure.
- Do not twist or kink the water supply or drain hose.
 - It may cause a water leak, ice to melt in the bin or product failure.
- The ice maker must be on a dedicated circuit.
 - When multiple plugs are connect using a power strip, it may cause a fire.
- Do not let children climb or hang on the ice maker.
 - The ice maker may fall and cause serious injury.
- Do not use the product outdoors.
 - The product is for indoor use only at temperatures between 50-100°F.
 - When product is used outdoors, it may cause deformation of the unit, discoloration and product failure.



Safety Precautions

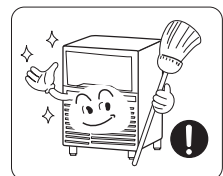
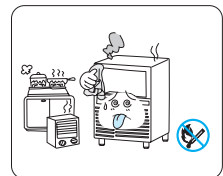
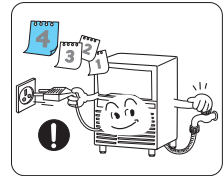
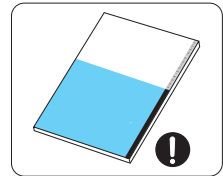


- Use this product as described in the user manual.
 - If you do not follow the instructions, it may cause an electric shock or property loss.
 - When transferring the product to another person, transfer the user manual with the product.

- When the product is not going to be used for a long period of time, shut off the water supply, remove the ice and disconnect the plug from the outlet.

- Do not use the product near the fireplace.
 - It may cause a fire.

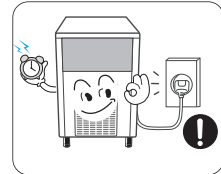
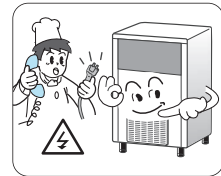
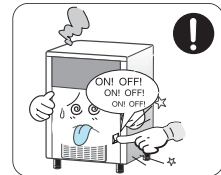
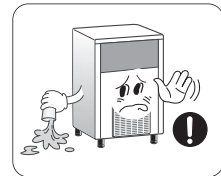
- Install the product in a sanitary area.
 - Because ice is edible, install the product in a sanitary and clean area.





Caution

- When needing to store ice for a long period of time, remove the ice from the bin and store in a freezer.
 - The ice bin is not refrigerated and relies on the ice coldness. Ice will melt over time.
- Do not frequently press the switch.
 - If you frequently pressed the switch, it may cause a product failure.
- If a water leak occurs, unplug the unit and close the water supply valve. Contact your local service agent.
 - If you unplug the unit with wet hands, it may cause an electric shock.
- After installation, wait at least two hours before plugging into the power outlet.
 - It takes this amount of time to stabilize the refrigerant.



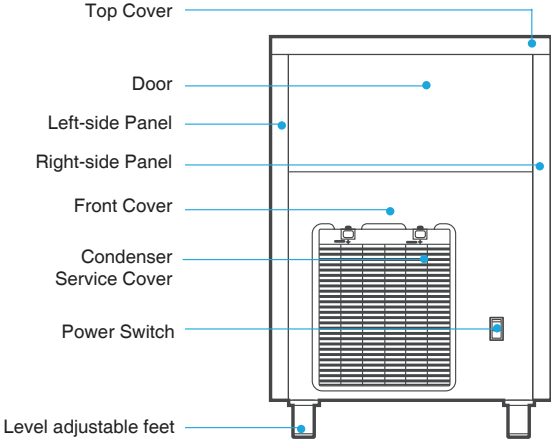
Attention!



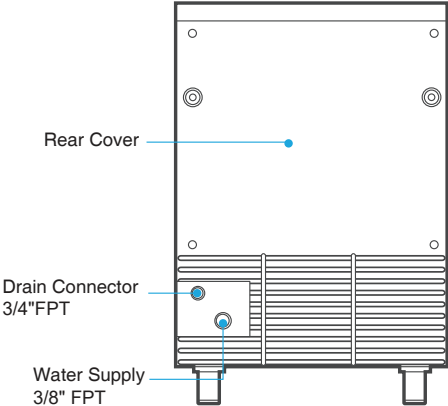
Clean the ice storage bin frequently for hygiene.

Major Components (KCU-80-AB)

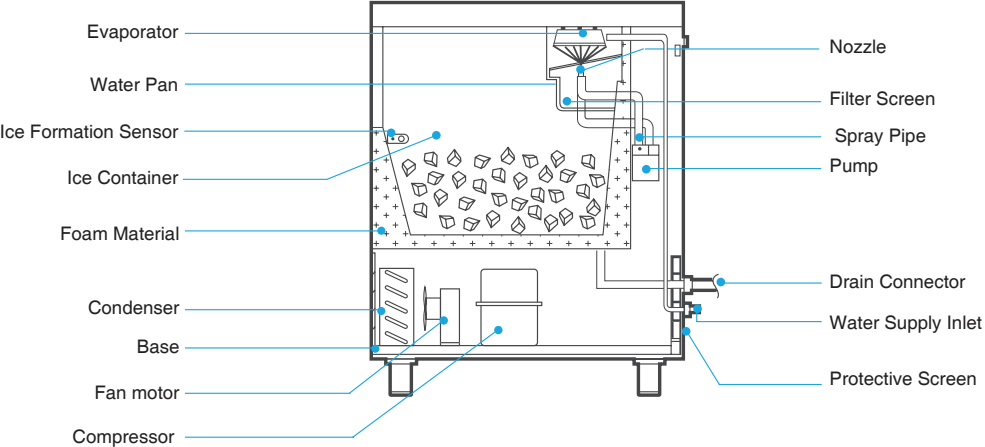
Front View



Rear View



Side View

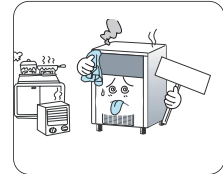


Cautions for Installation

Location

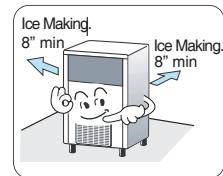
Locations away from direct heat sources.....

- The machine should be installed where there is no heat source such as stove or gas range.
- Ambient temperature must be between 50~100°F.



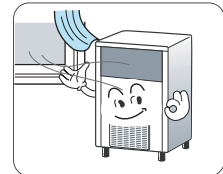
Locations with enough clearance from the wall.....

- The minimum distance required is 8" at least from the walls for normal operation.



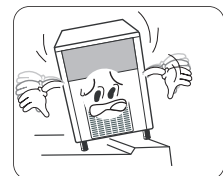
Locations with good ventilation.....

- Poor ventilation may lead to poor ice making capability.



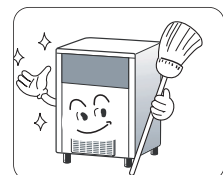
Even surfaces.....

- Uneven surface will result in too much noise or vibration.
(The surface angle must be less than 1°.)



Be sure to install the machine in a clean area.

- Ice is edible; thus installation site must be clean and hygienic.

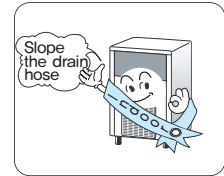


Cautions for Installation

[Location]

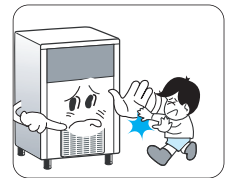
The machine must be installed indoors.

- Do not install outdoors.
- Run the drain hose with an appropriate slope for smooth draining, a 1/4" drop per foot of hose is required.



Install in a place inaccessible to children.

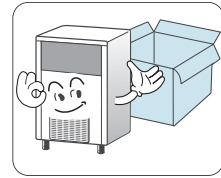
- Do not allow a child to take out ice without supervision.
- Do not allow children to play around the ice machine.



Installation

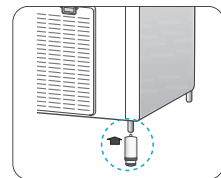
1. Unpacking the product

- Unpack the product and take out the parts packed inside the product.



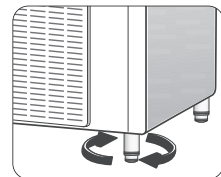
2. Assembling the feet

- Assemble the 4 height adjustable feet on the bottom of the Ice Maker.



3. Level Adjustment

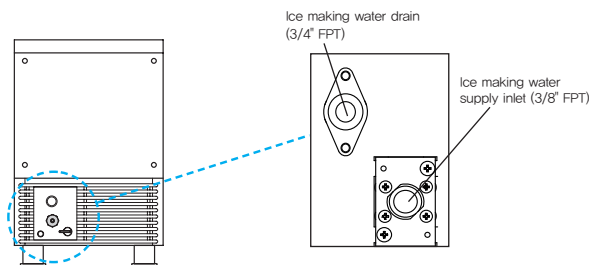
- Adjust the level of the machine with the height adjustable feet. Lift the front side with the front feet so that the machine is inclined slightly towards the rear. (Make the front side higher than the rear side by 1/4-3/8")



4. Connect the water supply and drain hoses tightly to prevent water leaks.

	Appropriate water temperature	Water pressure	Appropriate piping /hose size
Ice making water supply	50 ~ 90 °F	20 ~ 80 psi	3/8" FPT
Ice making water drain	-	-	3/4" FPT

- Too high temperature of the ice-making water will decrease the amount of ice produced; too low pressure will prevent ice from being made at all. Install an auxiliary pressure pump in this case.

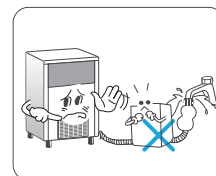


1. Use filtered water or tap water to supply the ice maker.
2. The pressure and temperature of the supply water must be 20 ~ 80 psi, and 50 °F ~ 90°F, respectively.
3. Condensation may form on the door or on the drain hose and flow down to the floor.
4. Connect the water supply and drain hoses tightly to prevent any water leaks.

Correct Operation

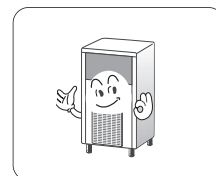
Protecting the water supply hose

- Do not put heavy objects on top of the water supply hose



Operate at appropriate water pressure and temperature, and ambient temperature;

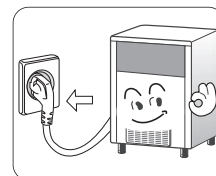
- The pressure and temperature of the supply water must be 20 ~ 80 psi and 50°F ~ 90 °F respectively, and the ambient temperature must be between 50 ~ 100°F.



Operating Procedures

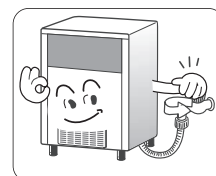
1. Power Supply

- This Ice Maker is designed for indoor use only.



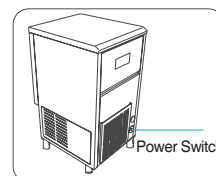
2. Water Supply

- Open the water supply valve to feed water.



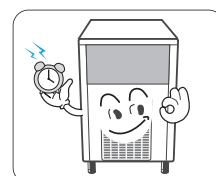
3. Ice Making Operation

- Turn on the power switch located on the front panel.



4. Completing Ice Making Operation

- Operating under appropriate conditions, the first ice making cycle will be completed in 20-30 minutes.
- Discard the first batch of ice and consume ice starting from the second ice making cycle.

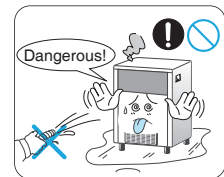


Disassembling, Cleaning

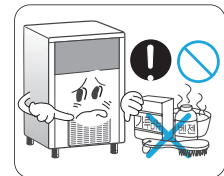
▮ Please read and observe the following instructions ▮

Warning : Unplug the power cord before cleaning the Ice Maker or replacing parts.

Do not spray water on the Ice Maker.
Otherwise, there is danger of current leak, electric shock
and/or fire.

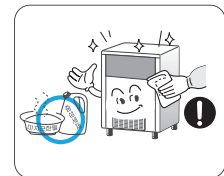


Do not use powder soap, benzene, thinners, hydrochloric
acid, oil, hot water, or wire brush for cleaning as these may
damage the product.



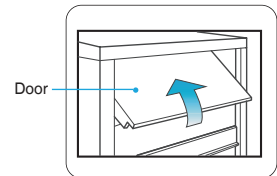
Proper cleaning

- Clean the product with a soft cloth soaked in warm water and/
or a neutral detergent.
- When cleaning with a neutral detergent, wipe the product again with a
clean, wet cloth.

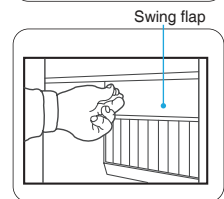


How to clean

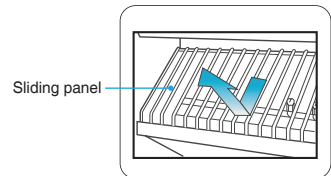
1. Open the door of bin storage



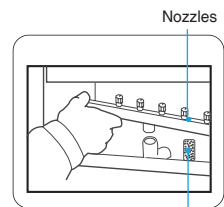
2. Loosen and remove the screws on both sides of the panel, and remove the swing flap.



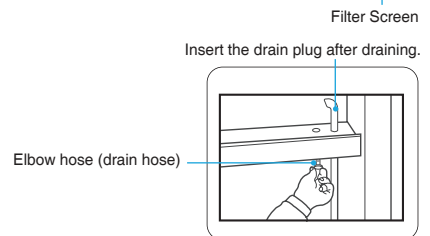
3. Remove and clean the sliding panel.



4. Remove and clean the nozzle assembly.



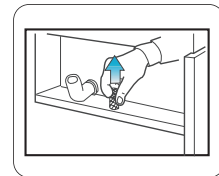
5. To clean the water pan, remove the drain plug.
The water in the pan will drain by itself.



6. Using a sponge, clean the water pan.

7. Remove and clean the filter screen.

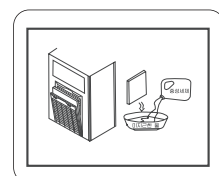
Caution: Make sure to reinstall the filter screen. Otherwise, the nozzles may get clogged.



8. As illustrated in the figure on the right, open the condenser cover; remove and clean the filter with warm water (77°F) and/or a neutral detergent. Dry the filter element before reinstalling.

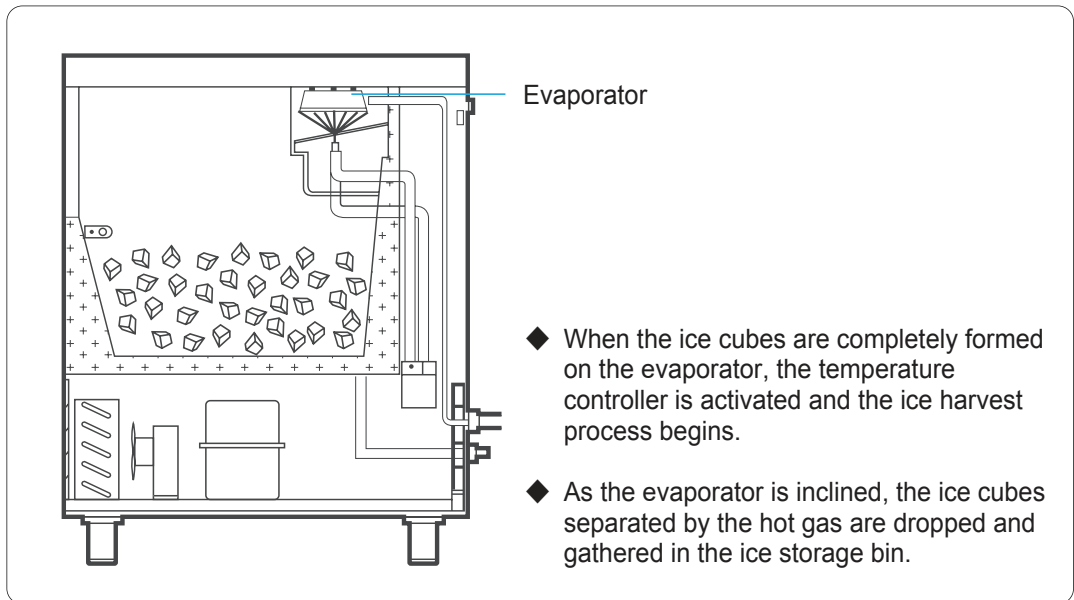
※ Clean the filter element at least once a month.

Caution: Beware of the sharp fins during cleaning work.

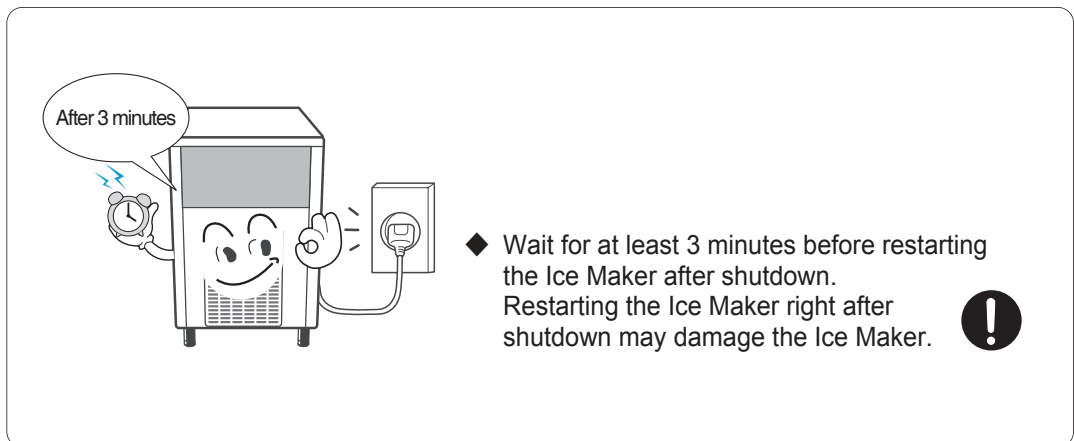


9. Clean the evaporator before starting operation.
10. For cleaning, use a kitchenware-grade detergent or other agents that are easily dissolved in water or vinegar. Clean the outer surface of the Ice Maker using a soft plastic brush or sponge and rinse well with clean water.
11. Do not use any detergent or powder which may damage the Ice Maker.
12. For thorough cleaning, repeat the above described cleaning process using an appropriate detergent.
13. After cleaning and/or sterilization, discard the first batch of ice and consume the ice starting from the second batch.
14. The ice bin must be cleaned at least once a month.

Ice Making and Harvest



| Restarting Procedure |

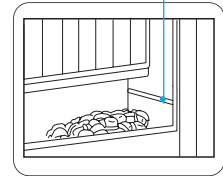


Checkpoints

■ Sensor System ■

1. The Ice Maker is designed to include an ice storage bin.
2. When the volume of the ice reaches the preset limit, ice formation is automatically stopped by a detector sensor.
3. When the ice cubes are removed from the machine, the ice detector sensor automatically restarts a new ice making cycle to produce new ice cubes.
4. The Ice Maker operates as a fixed system.

Ice Volume Detector Sensor



Maintenance

1. General Maintenance and Check Procedure

- Please observe the installation and operation instructions provided in this User's Manual.
- To maintain the proper condition of the Ice Maker and long-term operation without failure, perform the maintenance procedures provided below;

2. Inspection of the Ice Maker

- Make sure to shut off the main power supply before servicing the machine.
- Check all hoses and joints to prevent leakage.
- Protect the cooling plate from rubbing against another plate and/or vibrating.
- Do not obstruct air way. Allow sufficient ventilation to the Ice Maker.
- Clean the filter installed on the front side of the product at least once a month.

Product specification

ITEMS	UNIT		SPECIFICATIONS
			KCU-80-AB
Maximum Production Capacity	Lbs/24hour	50°F	73
Cooling Capacity	-		Ice generation 30 minutes after the start up.
Size (without legs)	Width		15.8
	Depth	inch	24.8
	Height		34.6
Power Supply	V		115V/60Hz
Weight	Before packaging	lb	110.2
	After packaging	lb	114.6
Cooling unit	Refrigerator	Type	R134a
	Condensor	Air	Fin Tube
	Shape of ice	-	Bullet cube
Power consumption	W		280
Temp. Control	-		MICOM CONTROL
Timer Control	-		MICOM CONTROL
Water Supply Temperature	-		50 ~ 90 °F

Troubleshooting Chart

Please check the following points before calling for service.

Operating Condition	Check Points	Corrective Action
1. The machine does not run	<ol style="list-style-type: none"> 1. Power supply 2. Power switch position 3. Power supply voltage (115V) 4. After power on and water feed, does the ice sensor work? 	<ol style="list-style-type: none"> 1. Connect power supply 2. Turn on the power switch 3. Check the voltage. Use an exclusive receptacle. 4. Remove the ice.
2. Water supply failure	<ol style="list-style-type: none"> 1. Position of the water supply valve 2. Water supply hose connection 3. Water service condition 	<ol style="list-style-type: none"> 1. Open the water supply valve. 2. Check the joint, and take necessary action 3. If the water service has been cut-off, wait until the service resumes.
3. The machine runs but ice is not formed.(Ice quality or cone-shaped ice cubes)	<ol style="list-style-type: none"> 1. Spray nozzle clogged 2. Water supply condition 3. Compressor function 4. Dust on the front filter- ventilation through the filter 5. Condenser fan motor operation 6. Any heat source near-by 7. Drain hose is too low feeding less water than needed 	<ol style="list-style-type: none"> 1. Clean the nozzle 2. See "Water supply failure." Clean the filter element and water supply valve 3. Contact a qualified technician. 4. Clean the filter element on the front side 5. Contact a qualified technician. 6. Keep away from heat source 7. Adjust height of drain hose.
4. Normal condition	<ol style="list-style-type: none"> 1. Light water flow is normal to allow for the ice cubes to flow. 2. The Ice Maker may vibrate a little, which is normal 	
5. Over-cooling	<ol style="list-style-type: none"> 1. Ambient temperature lower than 50°F 2. Insufficient water supply 	<ol style="list-style-type: none"> 1. Keep the ambient temperature above 50°F 2. Insufficient water causes over-cooling. Adjust water feed rate
6. Abnormal noise	<ol style="list-style-type: none"> 1. Check the evenness/level of the floor 2. The machine is close to a wall 	<ol style="list-style-type: none"> 1. Adjust the level. 2. Secure about 8" distance from the wall
7. Water in the ice storage	<ol style="list-style-type: none"> 1. Foreign matter in the drain hose 	<ol style="list-style-type: none"> 1. Remove the foreign matter from the drain hose

Product Warranty

Ice Machine Limited Warranty

Subject to the exclusions and limitations below, MVP Group warrants to the original consumer that any new ice machine shall be free of defects in material or workmanship for the warranty period outlined below, under normal use and maintenance, and upon proper installation and start up in accordance with the instruction manual supplied with the product.

Who is covered?

This limited warranty only applies to the original consumer of the product and is not transferable.

What are MVP Group's obligations under this limited warranty?

If a defect arises and MVP Group receives a valid warranty claim prior to the expiration of the warranty period, MVP Group shall, at its option: (1) repair the product at MVP Group's cost, including straight time labor charges, (2) replace the product with one that is new or at least as functionally equivalent as the original, or (3) refund the purchase price for the product. Replacement parts are warranted for 90 days or the balance of the warranty period, whichever is longer. The foregoing constitutes MVP Group's sole obligation and the consumer's exclusive remedy for any breach of this limited warranty. MVP Group's liability under this limited warranty is limited to the purchase price of the product. Additional expenses including, without limitation, service travel time, overtime or premium labor charges, accessing or removing the product, or shipping are the responsibility of the owner.

All Commercial units sold in the United States, Canada, and Puerto Rico are covered for 3 years parts and labor, and an additional 2 years on compressor only.

Residential and Outdoor units shall be covered for 12 months parts and labor from the date of sale.

Storage bin limited warranty

MVP Group warrants that new ice storage bins shall be free of defects in material or workmanship under normal and proper use and maintenance as specified by the MVP Group and upon proper installation and start-up in accordance with the instruction manual supplied for two years parts and labor from date of sale.

NOTE: Ice makers sold outside of the covered zones (United States, Canada and Puerto Rico) as well as all 50 Hz units shall be warranted for 24 months parts only from the date of sale.

What is not covered?

This limited warranty does not cover, and you are solely responsible for the costs of: (1) periodic and/or routine maintenance, (2) repair or replacement of the product or parts due to normal wear and tear, (3) defects or damage to the product or parts resulting from misuse, abuse, neglect, or accidents, (4) defects or damage to the product or parts resulting from improper or unauthorized alterations, modifications, or changes, and (5) defects or damage to any product that has not been installed and/or maintained in accordance with the instruction manual or technical instructions provided by MVP Group. To the extent that warranty exclusions are not permitted under some state laws, these exclusions may not apply to you.

This limited warranty is the sole and exclusive warranty of MVP Group with regard to the product. All implied warranties are strictly limited to the duration of the limited warranty applicable to the products as stated above, including but not limited to any warranty of merchantability or of fitness for a particular purpose. In no event shall MVP Group or any of its affiliates be liable to the consumer or any other person for any incidental, consequential, or special damages of any kind (including, without limitation, loss of profits, revenue, or business) arising from or in any manner connected with the product, any breach of this limited warranty, or any other cause whatsoever, whether based on contract, tort, or any other theory of liability. Some states do not allow the exclusion or limitation of incidental or consequential damages, so the above limitation or exclusion may not apply to you.

Replacement Part Warranty: Following the expiration of MVP Group's product warranty, any replacement part purchased by the equipment owner is warranted for a period of ninety (90) days from installation date of replacement part, the compressor or evaporator is warranted for a period of one (1) year from installation date of replacement part. All parts are to be sourced through the local Distributor to qualify for warranty.

Labor warranty is to repair or replace defective components as per time and hourly rate guidelines published by MVP Group. Shall not include travel, normal maintenance, cleaning, adjustments, or correction of improper installation.

How state law applies

This limited warranty give you specific legal rights, and you may also have rights that vary from state to state or from one jurisdiction to another.

Registration

To register your product, please go to www.mvpgroupcorp.com and complete the warranty registration process.

To obtain warranty service, please contact us at:

MVP GROUP CORP.

5659 Royalmount Ave.

Montreal, QC Canada H4P 2P9

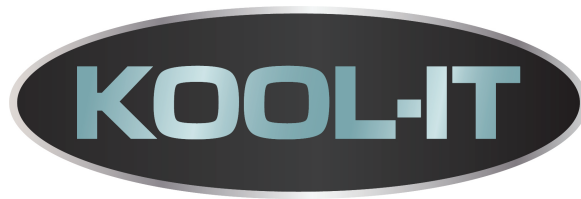
Tel 514.737.9701

Fax 514.342.3854

service@mvpgroupcorp.com

MEMO

MEMO



Toll Free: (888) 275-4538
international: (514) 737-9701
Fax: (514) 342-3854
Toll Free Fax: (877) 453-8832

3240414-00