

Mega Refrigerated Sandwich/Salad Prep Table

SKU: 12000-180

70000-020

12000-181

12000-799

70000-021

Upgrade your food business with premium Refrigerated Mega Prep Tables!

Expertly designed to organize and chill ingredients, these tables streamline preparation for everything from sandwiches to salads and more.

FEATURES:

- **Ample Sample**

Features a spacious working area, perfect for storing extra ingredients and optimizing prep efficiency

- **Energy Efficiency**

Built with a Cyclopentane isolation system to maintain storage temperatures while minimizing energy consumption

- **Durability**

Constructed with high-quality stainless steel for lasting durability, superior hygiene, and adherence to food-grade standards

- **Convenience**

Equipped with a thick, commercial-grade cutting board for effortless slicing and dicing, protecting surfaces from scratches and knife marks

- **Mobility**

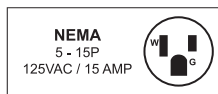
Heavy-Duty casters provide easy movement and setup while keeping surfaces unscathed

- **Eco-Friendly**

Utilizes Hydro-Carbon R290 refrigerant, offering an environmentally friendly solution that cuts energy costs by up to 28%

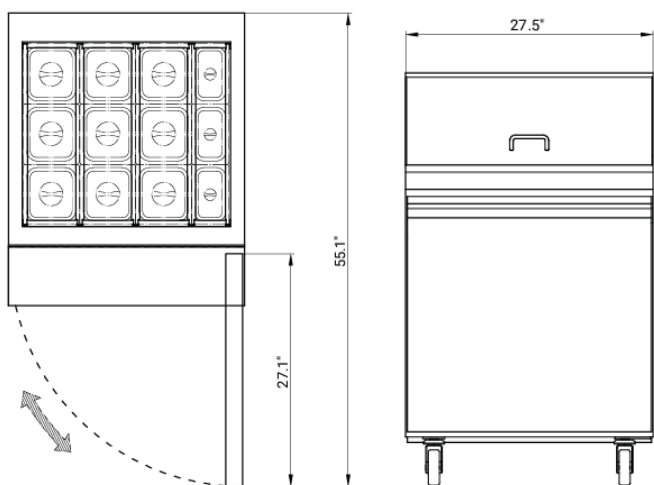


Made in China

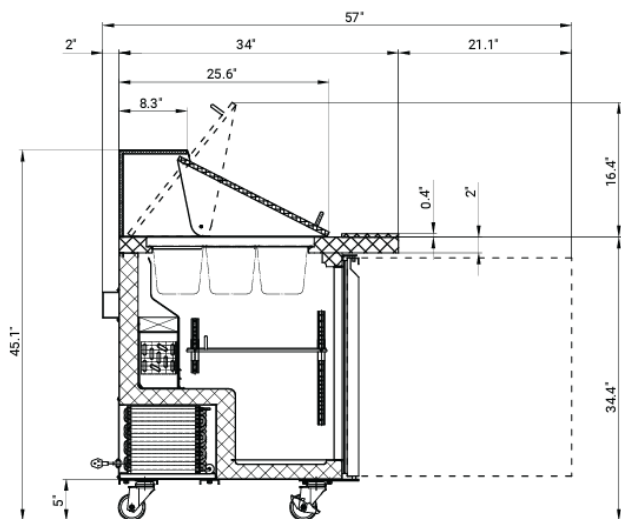


2 YEARS
WARRANTY
PARTS & LABOUR
5 YEARS ONLY
ON COMPRESSOR

TECHNICAL DRAWING



FRONT VIEW



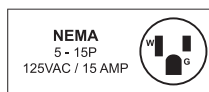
SECTION VIEW



12000-180
28" Mega

TECHNICAL SPECIFICATION

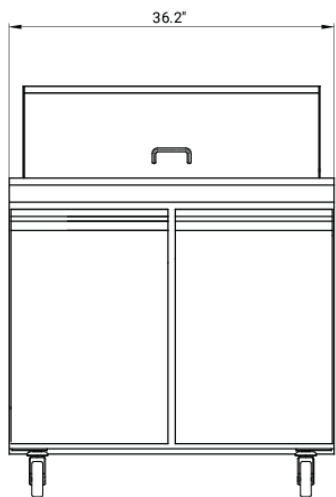
SKU	12000-180
Capacity	201L 7.1 cu.ft.
Temperature Range	0.5°C - 4.4°C 33°F - 40°F
Max Ambient Temp Rating	24°C 75°F
Power	360W
Amps	3.6A
Electrical	115V / 60Hz / 1Ph
Refrigerant	R290
Isolation Material	Cyclopentane
Cooling System	Vetilated
Defrosting	Automatic
Type of Controller	Digital
Self-Closing Door	Yes
Number of Doors	1
Number of Shelves	1
Number of Casters	4
Shelf Loading Capacity	88 lbs. 40 kgs.
Shelf Material	Plastic Coated
Number of Insert Pans	3 x 19 GN 9 x 1/6 GN
Interior Dimensions (WDH)	24.2" x 19.8" x 23.5" 615 x 504 x 597 mm
Overall Dimensions (WDH)	27.5" x 34" x 45.9" 698 x 864 x 1166 mm
Net Weight	198.4 lbs. 90 kg.
Gross Dimensions (WDH)	32.7" x 39.2" x 49" 830 x 995 x 1245 mm
Gross Weight	251.3 lbs. 114 kg.



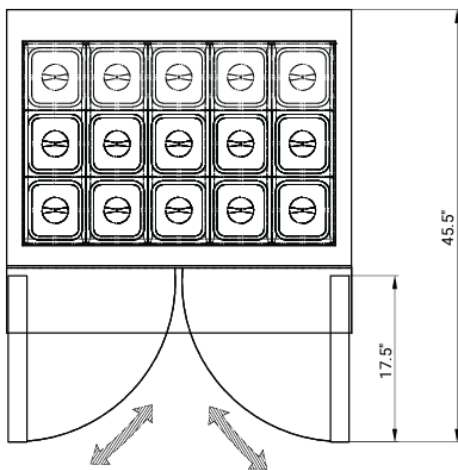
TECHNICAL SPECIFICATION			
SKU	70000-020	12000-181	12000-799
Capacity	258L 9.1 cu.ft.	357L 12.6 cu.ft.	469L 16.6 cu.ft.
Temperature Range	0.5°C - 4.4°C 33°F - 40°F		
Max Ambient Temp Rating	24°C 75°F		
Power	430W	490W	540W
Amps	4.3A	4.9A	5.4A
Electrical	115V / 60Hz / 1Ph		
Refrigerant	R290		
Isolation Material	Cyclopentane		
Cooling System	Vetilated		
Defrosting	Automatic		
Type of Controller	Digital		
Self-Closing Door	Yes		
Number of Doors	2		
Number of Shelves	2		
Number of Casters	4		
Shelf Loading Capacity	88 lbs. 40 kgs.		
Shelf Material	Plastic Coated		
Number of Insert Pans	15 x 1/6 GN	18 x 1/6 GN	24 x 1/6 GN
Interior Dimensions (WDH)	33" x 19.8" x 23.5" 837 x 504 x 597 mm	43" x 19.8" x 23.5" 1091 x 504 x 597 mm	56.5" x 19.8" x 23.5" 1434 x 504 x 597 mm
Overall Dimensions (WDH)	36.2" x 34" x 45.9" 920 x 864 x 1166 mm	46.8" x 34" x 45.9" 1188 x 864 x 1166 mm	60.2" x 34" x 45.9" 1529 x 864 x 1166 mm
Net Weight	242.5 lbs 110 kg	275.6 lbs 125 kg	341.7 lbs 155 kg
Gross Dimensions (WDH)	41.4" x 39.2" x 49" 1052 x 995 x 1245 mm	52" x 39.2" x 49" 1320 x 995 x 1245 mm	65.4" x 39.2" x 49" 1660 x 995 x 1245 mm
Gross Weight	308.6 lbs 140 kg	370.4 lbs 168 kg	427.7 lbs 194 kg



TECHNICAL DRAWING

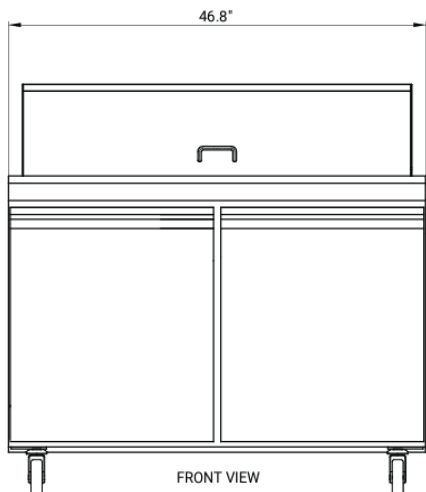


FRONT VIEW

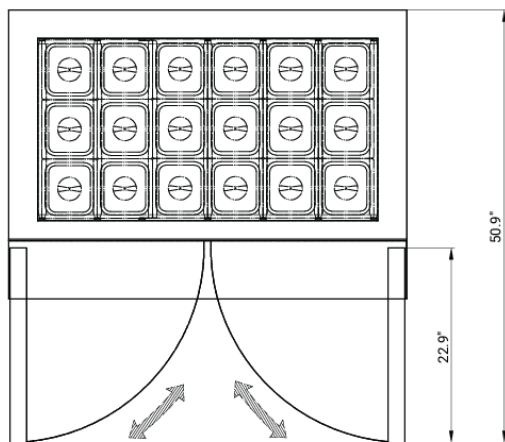


TOP VIEW

70000-020
36" Mega

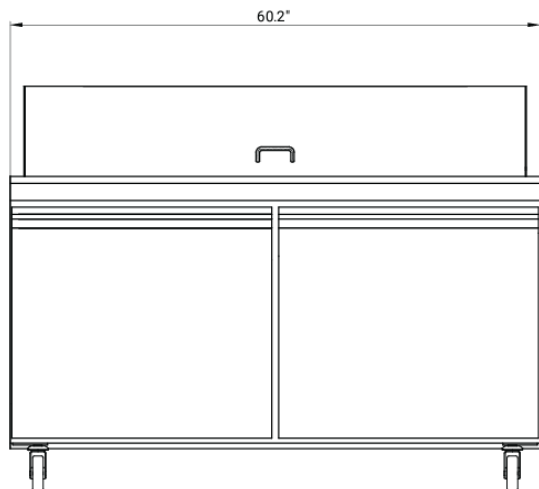


FRONT VIEW

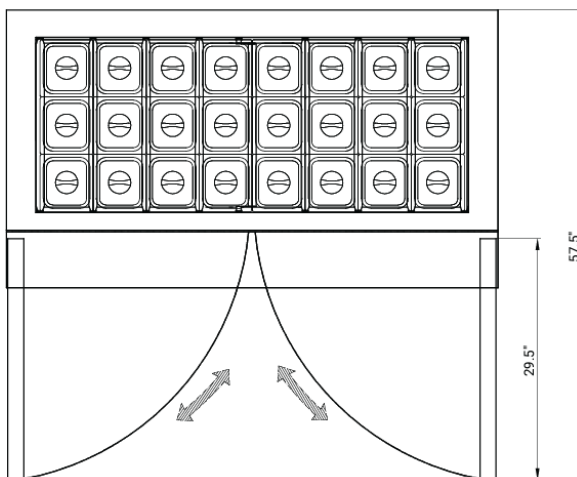


TOP VIEW

12000-181
47" Mega

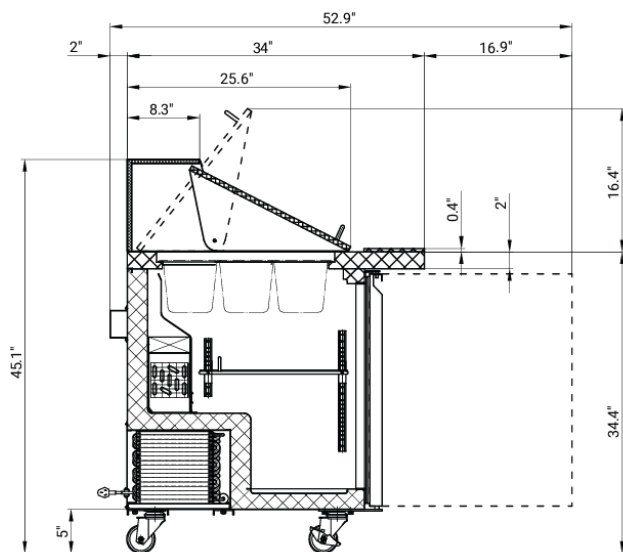
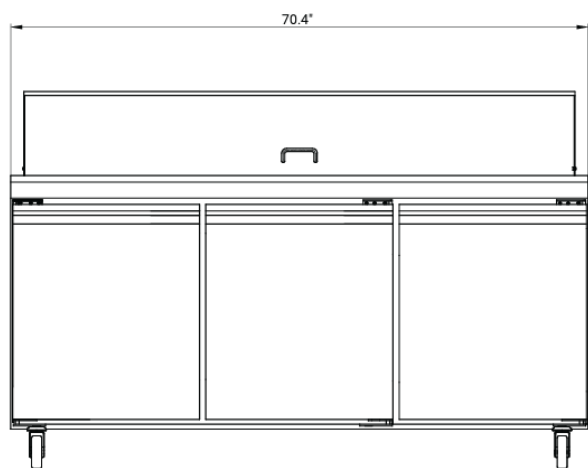
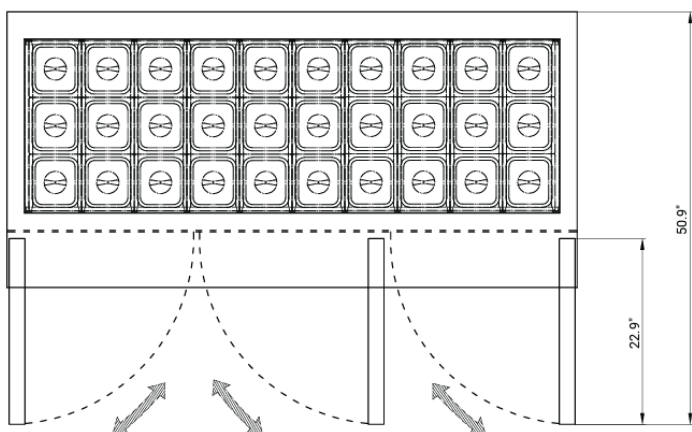


FRONT VIEW



12000-799
60" Mega

TECHNICAL DRAWING



TECHNICAL SPECIFICATION

SKU	70000-021
Capacity	553L 19.5 cu.ft.
Temperature Range	0.5°C - 4.4°C 33°F - 40°F
Max Ambient Temp Rating	24°C 75°F
Power	780W
Amps	7.8A
Electrical	115V / 60Hz / 1Ph
Refrigerant	R290
Isolation Material	Cyclopentane
Cooling System	Vetilated
Defrosting	Automatic
Type of Controller	Digital
Self-Closing Door	Yes
Number of Doors	3
Number of Shelves	3
Number of Casters	5
Shelf Loading Capacity	88 lbs. 40 kgs.
Shelf Material	Plastic Coated
Number of Insert Pans	30 x 1/6 GN
Interior Dimensions (WDH)	66.6" x 19.8" x 23.5" 1691 x 504 x 597 mm
Overall Dimensions (WDH)	70.4" x 34" x 45.9" 1787 x 864 x 1166 mm
Net Weight	374.8 lbs 170 kg
Gross Dimensions (WDH)	75.6" x 39.2" x 49" 1920 x 995 x 1245 mm
Gross Weight	577.6 lbs 262 kg



12000-799
71" Mega

