

BL-WBD

NON REFRIGERATED | BAKERY / BREAD DISPLAY CABINET

DESCRIPTION OF STANDARD UNIT:

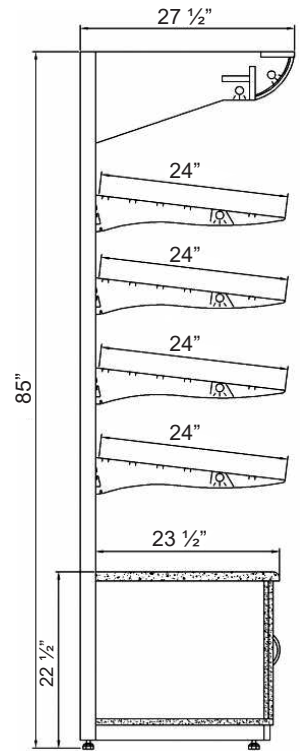
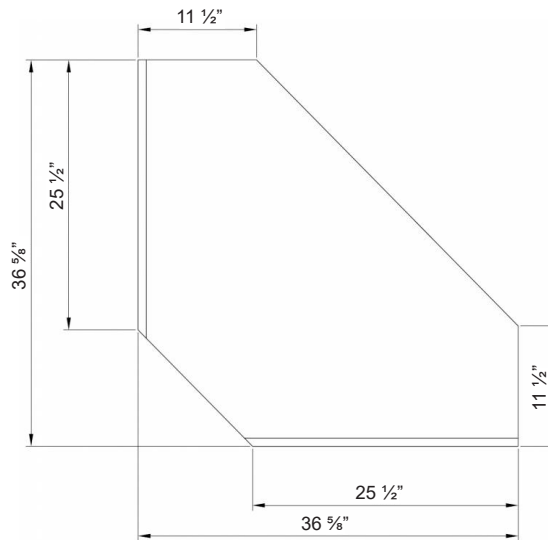
- Construction of MDF
- LED Lighting
- 4 rows of powder-coated steel shelves: golden, silver or black
- Adjustable, highlighted shelves
- Yellow lighting
- Light plafond
- Cupboard with sliding doors

OPTIONS:

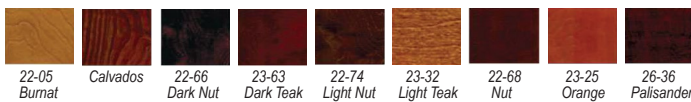
- Mirrored back panel
- Wooden shelves
- Basket for BAKERY
- Granite top



SPECIFICATIONS					
MODEL	LENGTH	DEPTH	HEIGHT	WEIGHT (LBS / KG)	ELECTRICAL
BL3-WBD	35 1/2"	27 1/2"	85"	198 / 90	115V / 60Hz / 1ph / 2 AMP
BL4-WBD	47"	27 1/2"	85"	242 / 110	115V / 60Hz / 1ph / 2 AMP



Wood Stains



Available Colors



154 Norfinch Dr, Unit 5 - 6, North York, Ont, M3N 1X6 | TEL: 416-665-0095 | TOLL FREE: 877-265-0095

info@frosttechrefrigeration.com | www.frosttechrefrigeration.com

